



# Surveillix

## Central Station Software

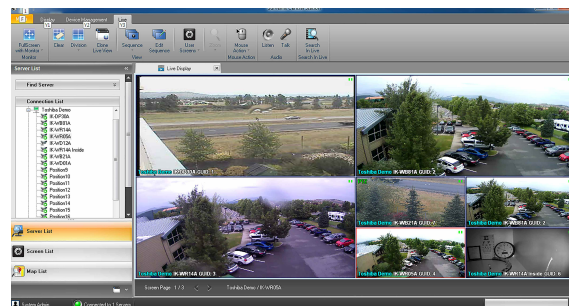
### Multi-site Management

Toshiba's Surveillix Central Station video management software enables you to monitor, search, and archive surveillance video from multiple remote locations. It allows you to manage and configure your Toshiba video recorders from a single, easy to use platform. Customizable user screens, intuitive search capabilities and advanced mapping features make Surveillix Central Station powerful and efficient for your video surveillance requirements.

- Remotely manage unlimited number of hybrid and network video recorders
- Intuitive user interface
- Customizable live video matrix
- Powerful search capabilities
- Advanced mapping functions
- Bandwidth management
- Utilize enterprise network logins
- Multiple monitor support

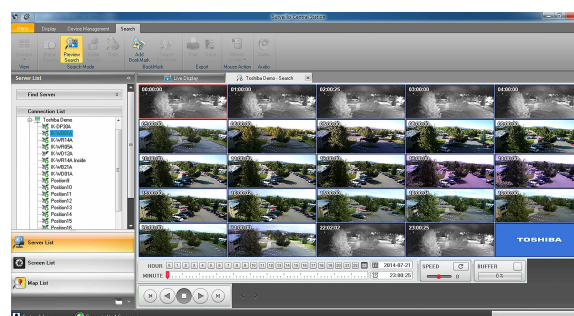
## CUSTOMIZABLE LIVE VIDEO MATRIX

- Toshiba's Surveillix Central Station allows users to customize the live video screen to any configuration.
- With drag and drop functionality and multiple screen divisions, setting up and saving a live video screen is easy and intuitive.
- Saved screens can be organized into logical groups and accessed based on user logins.



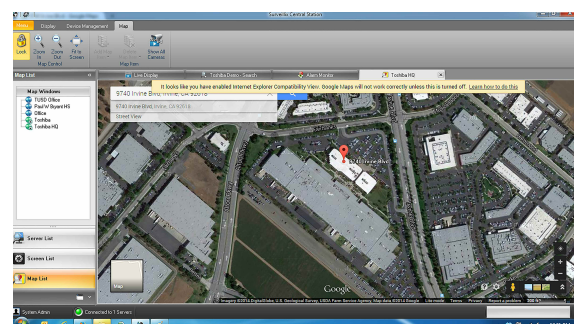
## POWERFUL SEARCH CAPABILITIES

- Multiple search functions make accessing recorded video fast and efficient.
- With Preview Search, a 24 hour period of video can be visually searched and narrowed to 1 minute with 3 mouse clicks.
- Search-in-Live allows users to view recorded video from one camera while still viewing live video from all other cameras.
- Status search's bar chart format lets users quickly find motion based events.



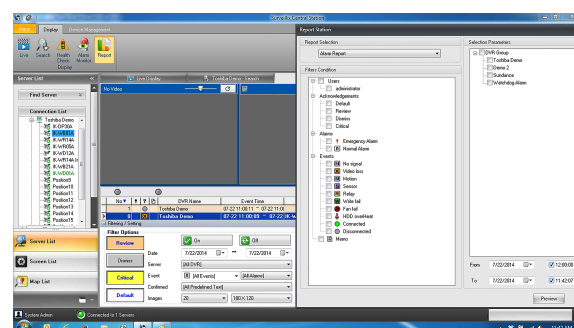
## ADVANCED MAPPING CAPABILITIES

- The ability to map cameras on CAD, JPEG, BMP or Google maps makes it easier to find video in large scale deployments.
- Multiple level mapping makes it possible to link maps to other maps and organize multiple site camera environments.
- Creating and saving maps is fast and easy.



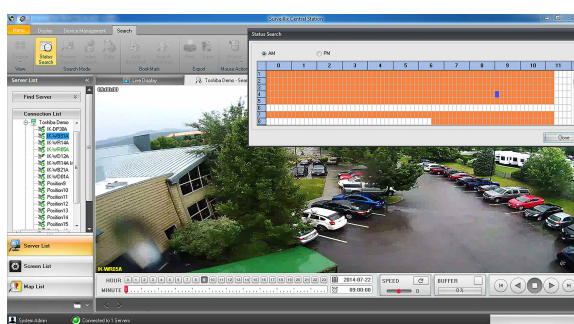
## ALARM LOG

- Actively monitor alarm events with detailed information on each alarm.
- Instantly review the video associated with each alarm quickly.
- Filter the alarm log based on site, alarm type and time/date.
- Users can run an alarm log report that summarizes alarm types, time/date, and site and can export in HTML, CSV, Excel or text formats.



## REMOTE CONFIGURATIONS

- With Toshiba's Surveillix Central Station, you can remotely configure all recorders or change setup settings.
- Adding IP cameras, adjusting motion detection areas, changing schedules and updating users is possible without the need to access the recorders locally.
- Almost all setup functions are available to remote users with the proper permissions



## LIVE VIEW

- Stream live video at full resolution and frame rate\*
- Drag and drop camera positions
- Tree style directory server list
- Full screen camera view
- 4/9/16/25/36/49/64 and 3+4, 2+8, 1+12, 1+14 camera division layouts
- Clone live view on separate screen
- Hidden camera capability
- Sequence through cameras or user screens
- Custom sequence
- Unlimited customizable user screens in unlimited groups
- Digital zoom for individual cameras
- 2 way audio capabilities
- Search-In-Live mode
- Pause live video on individual cameras
- Screenshot capture on individual cameras
- PTZ and relay controls
- 360 degree and panoramic camera support
- \*Live video rendering limited by client workstation performance and network bandwidth

## SEARCH AND PLAYBACK

- Time/Date search
- Preview, Status, Index, and Point of Sale data search modes
- Multiple camera playback
- Fast forward, fast rewind, slow forward and slow rewind playback
- Bookmarking
- Print screenshot
- Save as JPEG or AVI with selectable compression
- Audio playback
- Digital zoom on playback
- Network and clip backup

## ALARM MONITOR AND HEALTH CHECK

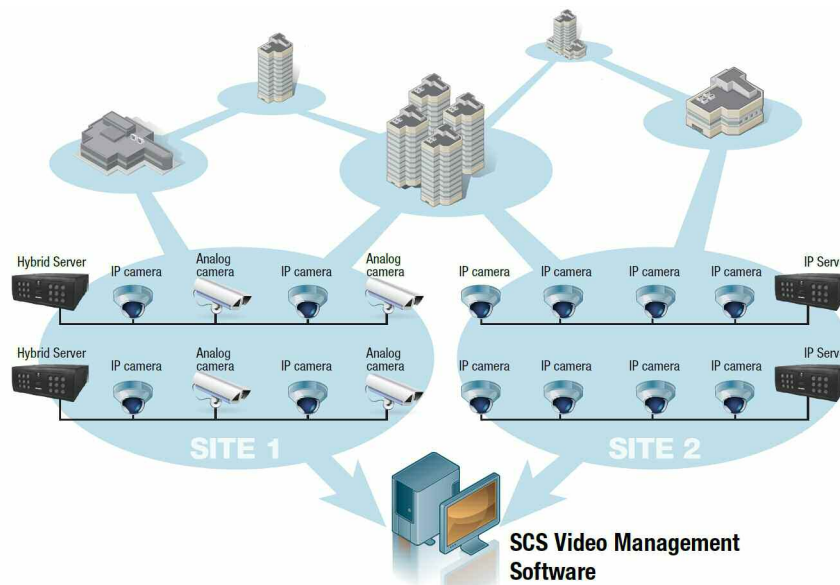
- Alarm logging server, camera, and event time
- Log video loss, motion, sensor, relays, no signal, write failures, disconnections, fan failures and hard drive temperature
- View video from alarm events
- Alarm reporting including filtering by user, alarm types and servers
- Health check logging including video loss, recording loss, free space limit, hard drive error and recording days status
- Export reports in HTML, CSV, Excel and text formats

## CONFIGURATION AND SETUP

- Remote configuration on all recorders
- Import/Export Surveillix Central Station settings
- Customizable additional server information including manager name, phone, email and custom fields
- Full user management for Surveillix Central Station
- E-mail notification for alarm events
- LDAP support for network logins

## ADVANCED MAPPING

- Import DXF, DWG, JPG, BMP, WMF, EMF file formats
- HTML and Google map location support
- Unlimited number of maps
- Link from map to map
- Alarm indicator and sound on map
- Add and view cameras on map location
- Drop sensors and relays on map location



## SUPPORTED RECORDERS

Toshiba offers the Surveillix Central Station software for free without any recurring license fee. It is compatible with the following Toshiba hybrid and network recorders



**XVSV**



**XVSE**



**DVSE**



**IPSE**



**NVR Software**



**NVSPRO (4U)**



**NVSPRO (2U)**



**EHV4/8/16**

## SYSTEM REQUIREMENTS

	Minimum	Recommended
<b>Operating System</b>	Microsoft Windows 8, 7 (32-bit or 64-bit), Vista or XP	Microsoft Windows 7 (64-bit)
<b>Processor</b>	Intel Dual Core 2.8 GHz	Intel Quad Core i7
<b>System RAM</b>	2GB	4GB
<b>Video Card</b>	NVidia or ATI DirectX 9.0 compliant with 256MB RAM capable of 1280x1024 resolution 32-bit color	ATI 5750 or equivalent DirectX 9.0 compliant capable of 1280x1024 resolution 32-bit color
<b>Network Interface</b>	10/100 Mbps	1 Gbps
<b>Hard Disk Space</b>	500 MB	500 MB
<b>Other</b>	TCP/IP installed	TCP/IP installed

## SURVEILLIX CENTRAL STATION PRE-LOADED WORKSTATIONS

Toshiba offers tower and rack mount work stations pre-loaded with Surveillix Central Station software. Available with dual or quad monitor outputs. For more information visit [www.toshibasecurity.com](http://www.toshibasecurity.com)

- SCS-R2P – Rackmount dual monitor output**
- SCS-R4P – Rackmount quad monitor output**
- SCS-T2P – Tower dual monitor output**
- SCS-T4P – Tower quad monitor output**

